

**Beikell**

# User Guide

**Beikell M.2 SSD Enclosure**

**Model No.: B6315**

## Welcome

Thank you for purchasing this **Beikell** product. In order to ensure optimum performance and safety, please read this user manual carefully and keep it for future reference. If you need any additional assistance, please contact our customer support team or send us an email to [support@ibeikell.com](mailto:support@ibeikell.com).

## Package Contents

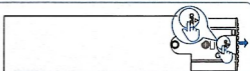
- 1 x M.2 SSD Enclosure
- 1 x USB A to USB C Cable
- 1 x USB C to USB C Cable
- 2 x SSD Fixing Buckles
- 1 x Thermal Silicone Pad
- 1 x User Manual

## Specification

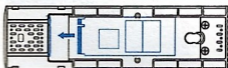
Product Name	M.2 SSD Enclosure
Interface	Type-C
Support SSD Specification	M.2 SATA + NVME SSD
Supported SSD Sizes	2230, 2242, 2260, 2280
Compatible Systems	Windows 7/8/10/11, Mac OS, Linux
Transmission Rate	10Gbps
LED Indicator	Blue
Dimensions	125*37*15MM
Net Weight	57g

## Installation Instructions

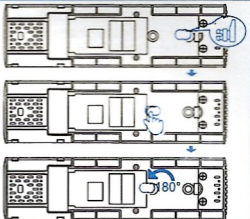
1. Press the "OPEN" button on the M.2 SSD Enclosure and push out the plastic inner frame.



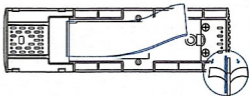
2. Connect the SSD interface to the interface socket in the plastic inner frame to install the SSD.



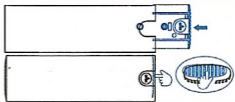
3. According to the size of the SSD (2230, 2242, 2260, 2280) used, adjust the installation position of the SSD fixing buckle accordingly (4 notches are optional); after adjusting the position of the fixing buckle, rotate the buckle 180° to fix the SSD.



4. Stick the thermal silicone pad to the SSD. (Note: Please peel off the film on both sides of the thermal silicone pad first.)



5. Push the plastic inner frame into the SSD enclosure and press the side; after a click, the installation is completed.



Note: After pushing the plastic inner frame into the SSD enclosure, you need to press the side to make the plastic inner frame fit perfectly with the SSD enclosure.

## Tips for Use

1. If your M.2 SSD is just purchased, when you use it for the first time, you need to set it up on the computer side before you can use it, if it appears that it cannot be recognized and used, please follow the operation steps to deal with it. You can also contact our customer support team or send an email to [support@ibeikell.com](mailto:support@ibeikell.com).
2. Operating Steps:
  - a. Confirm that the SSD is intact.
  - b. Install it properly in the M.2 SSD enclosure, please take care not to damage the SSD when installing it.
  - c. When using a newly purchased SSD for the first time, you will need to set it up on your computer before you can use it. Search for Disk Management on your computer -- follow the instructions on the page -- to complete the setup. (Note: When selecting a format, check the "exFAT" format.)

## Warnings

1. Do not use the product once damaged.
2. Avoid drops, impact, and extrusion.
3. Keep it away from water, fire, flammable gas and corrosive liquid.
4. Please do not disassemble or repair the product yourself as this may damage it or even cause a safety hazard.
5. Use in indoor and outdoor normal temperature environment
6. The product should be safely removed for actual use, otherwise the data will be lost accidentally and the company will not make any data recovery.
7. Do not use the files on the SSD directly for a long time as this may lead to high temperatures.
8. To avoid danger of suffocation, keep the product away from babies and children.

# Beikell

**TEL:** 1-800-360-5881

**EMAIL:** support@ibeikell.com

**WEBSITE:** www.ibeikell.com

© Shenzhen Teng Xun Zhan Yi Technology Co., Ltd.

All rights reserved.

Beikell M.2 SSD Enclosure

Model No.: B6315

**UK REP: GECHOY INNOVATION LTD**

7 COPPERFIELD ROAD, COVENTRY, WEST MIDLANDS,  
ENGLAND, UNITED KINGDOM CV2 4AQ

gechoy@outlook.com

**EU REP: FANNIEO SARL**

5 Impasse de la Colombe Bureau 3 31000 Toulouse

fannietech@outlook.com

**SUNTONIE TRADE INC**

401 Ryland Street Suite 200-A, Reno, NV 89502, USA

suntonie@outlook.com

**VESSONY TRADING INC.**

714-6081 NO.3 ROAD RICHMOND BC V6Y 2B2 CANADA

VESSONY@outlook.com

**Manufacturer:** Shenzhen Teng Xun Zhan Yi Technology Co., Ltd.

**Manufacturer Address:** Room 302, Building 8, Yunli Intelligent  
Park, Fada Road, Bantian Street, Longgang District, Shenzhen,  
Guangdong, China



Made in China

This device complies with Part 15 of the FCC Rules. Operation is subject to the following two conditions:

- (1) This device may not cause harmful interference, and
- (2) this device must accept any interference received, including interference that may cause undesired operation.